

Task

Inselspital, a medical centre and university hospital, is equipped to handle any situation. It offers a complete range of high quality care 24/7, 365 days a year. Specialists of various different specialty fields work hand-in-hand at the "Insel Campus", exchanging knowledge and developing new solutions. The services they perform are highly specialised and innovative, while being closely linked to research and development. As a result, patients receive "state-of-the-art" health services, and yet great value is placed on offering a quality of care that focuses on the patients' personal needs.

Inselspital, working on behalf and in close collaboration with the University of Bern's Medical Faculty, is in charge of the medical training of the university's students as well as for the continuing education of its medical specialists. Working closely with technical colleges, Inselspital plays an active role in providing practical training for a variety of different professions in the field of medicine.

With its professional organisation and management, Inselspital applies its capacities with the goal of strengthening the enterprise long-term and in doing so takes an integrated approach to dealing with ethical, economic, technical, social and ecological aspects.

As a public hospital, Inselspital is open to receive all patients who on their part have access to the latest medical developments, methods and opportunities at all times. This alone is good reason for patients from across Switzerland as well as from abroad to entrust the staff at Inselspital with their care needs.

Quality

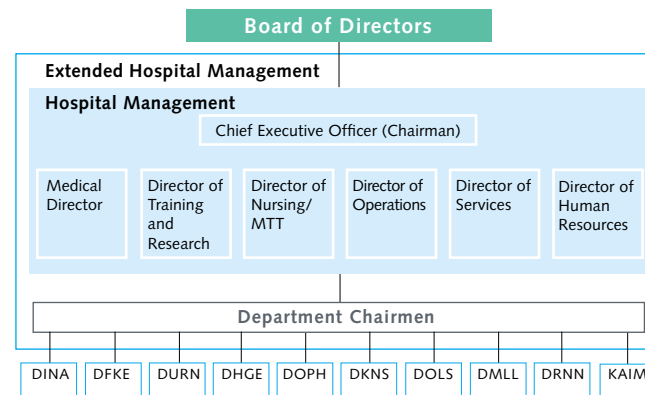
Inselspital is a medical centre of expertise, state-of-the-art technology and science with an international appeal. To be able to satisfy today's medical challenges demanded of a university centre health care provider, the basic principles it follows must place high value on continually improving and consistently optimising the quality of its care and offering highest quality services. Inselspital's quality management adheres to and strictly observes the principles and guidelines developed by the "European Foundation for Quality Management". It focuses on providing excellent medical services and health care to its patients that are both professional and compassionate. The main goal is to provide its patients with the best available treatment and care, and doing so while respecting their personal responsibility, freedom and dignity.

Inselspital is a partner in the collaboration between the University of Bern's Medical Faculty and other health care institutions. The role it plays is always reliable, supportive, active, transparent and with the highest level of esteem for its partners.

Organisation

The 37 university clinics and institutes within Inselspital are organised in nine departments and one clinic with a departmental function. Overall operational responsibility for day-to-day hospital activities is in the hands of a team of seven hospital executives under the leadership of an executive board. Along with the ten department chairmen, it represents an extended hospital management team that makes decisions on the university hospital's strategic course of direction. Inselspital's oversight authority is made up of seven to nine members of the supervisory board of the Inselspital Stiftung.

The privately owned foundation is the responsible body in charge of Inselspital and bears the responsibility for managing the medical centre and the university hospital. The services and performances Inselspital provides are defined in legal agreements concluded in particular with the Canton and the University of Bern.

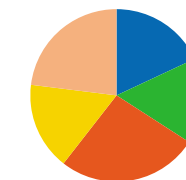


Patients

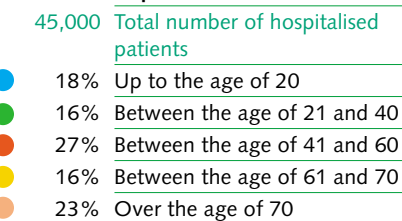
Every year, close to 45,000 people receive in-patient and day-care hospital treatment and more than 200,000 receive out-patient care. The hospital has 1,000 beds, its staff offering more than 300,000 care days, while an average hospital stay is 6.5 days. Close to 75 percent of Inselspital's patients come from the Canton of Bern, 23 percent from other areas in Switzerland, while 2 percent are from abroad.

80 percent of the hospital's patients have basic insurance coverage, while 20 percent have additional coverage.

Inselspital places high value on the opinion of its patients: It systematically surveys their satisfaction in the care provided and the results of these surveys are an important component in further developing the quality of its care.



Age of persons receiving in-patient care



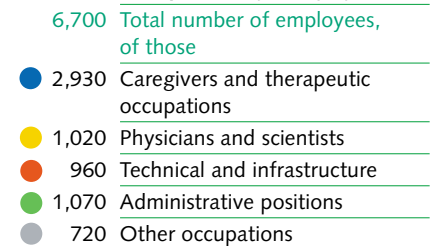
Employees

Working at Inselspital gives you the opportunity to dive into an exciting, highly specialised field, where you will meet challenges at the highest level. More than 6,700 employees are dedicated to providing expert and motivated care to patients and their skills to the benefit of research and development. The hospital offers a multicultural environment, where people from over 80 nations work in a wide variety of different career fields.

Compassion, professional expertise and reliability are personal character traits that are given highest priority when selecting Inselspital employees. It is simply a matter of course for the hospital's employees to provide excellent treatment options, personal care and service to its patients.

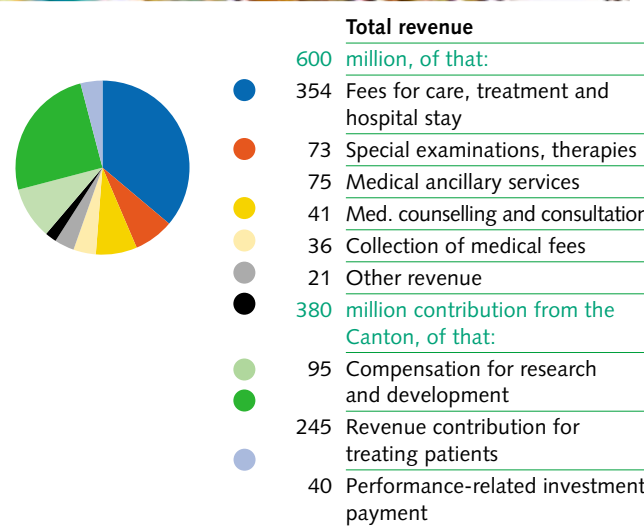
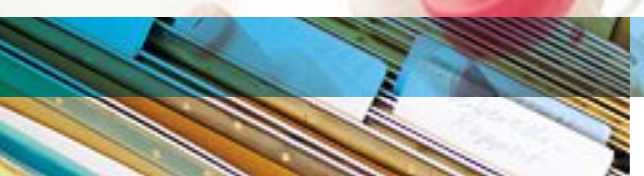
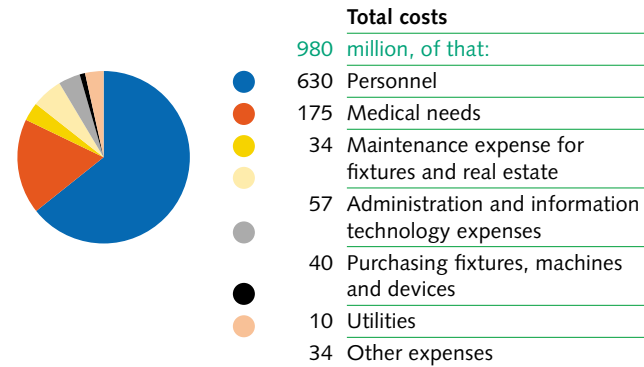
As an employer, Inselspital plays an important social role. It respects and supports its employees in integrating their work into the lives meaningfully and accepts the responsibility for the training and further education of its staff. Not only does the hospital encourage advanced education, it also requires it. Occupational groups, understanding of interdisciplinary subject matters, conceptual thinking and demanding that employees always provide best quality performance are all major factors that significantly shape the work environment at Inselspital.

Occupations by category



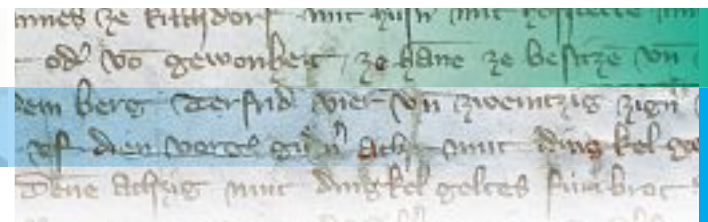
Financing

Each year, Inselspital has overall expenses of approximately 980 million Swiss Francs. Offsetting these costs is revenue totalling approximately 600 million Swiss Francs. The difference that remains is paid for by the Canton of Bern as a revenue contribution for treating patients and as compensation for research and development.



Background History

The story behind Inselspital begins in the late middle ages. On 29 November 1354, Anna Seiler, a townswoman of Bern, laid the "foundation stone" for Inselspital in her will. The name "Insel" (island) dates back to the relocation of the "Seiler Hospital" in 1531 to a location in the area of today's east wing of the Bundeshaus, the former Dominican monastery St. Michael, commonly known as "Island Monastery", because the former location of the monastery was on an island in the Aare River. Today's hospital complex is the result of a local and in part organisational coalition between different precursor institutions. Anna Seiler's original will has been kept preserved to this day and is stored in the Canton of Bern's public records office.



"Considering that nothing is more certain than death, but nothing is more uncertain than the time of death, I, Anne Seiler, in no way influenced by the malice of another, but instead of sound mind, health and after deliberate thought and due consideration as well as after consulting and obtaining the permission from the village mayor and the Council of Two Hundred, merely to perform God's will and dedicated to the salvation and solace of those who came before me and to all believers, hereby donate an eternal hospital. This hospital shall continuously house thirteen bed-ridden persons in need in addition to three other honourable persons, who shall be of service as caregivers to the poor bed-ridden persons..."

(Excerpt from the will)

How to Find us

Inselspital is located on the west side of the City of Bern and is easy to get to by car or by public transportation. When arriving with public transportation, take bus no. 11 from Bern's main train station towards Güterbahnhof until you arrive at the "Inselspital" bus stop. When arriving by car, exit the motorway at exit no. 35 "Bern-Forsthaus" and after approximately 800 metres going in the direction towards downtown, turn into the Insel-Parking at Murtenstrasse.



Inselspital
 Bern University Hospital
 CH-3010 Bern, Switzerland
 Telephone +41 (0)31 632 21 11
www.insel.ch

INSELSPITAL
 UNIVERSITÄTSSPITAL BERN
 HOPITAL UNIVERSITAIRE DE BERNE
 BERN UNIVERSITY HOSPITAL

9/2008 ZL10042434

Inselspital, Bern University Hospital
**Quality, Expertise
 and Compassionate Care**

INSELSPITAL
 UNIVERSITÄTSSPITAL BERN
 HOPITAL UNIVERSITAIRE DE BERNE
 BERN UNIVERSITY HOSPITAL

